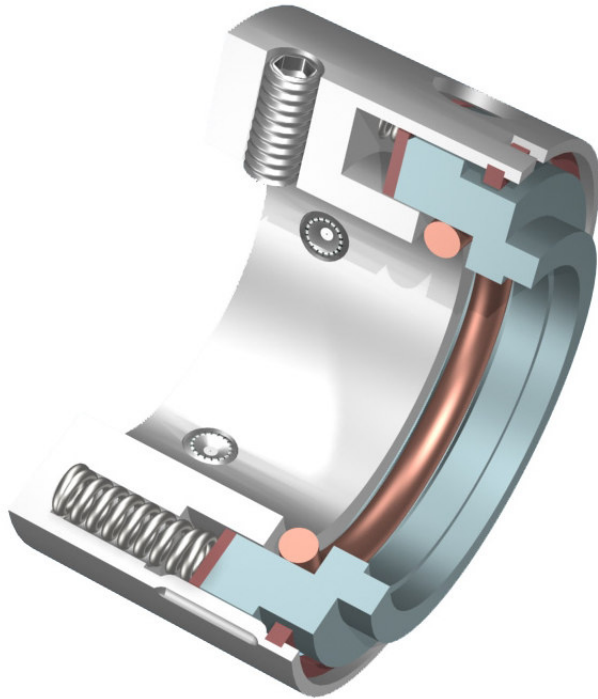


# SEB

## REVERSE BALANCED SEAL

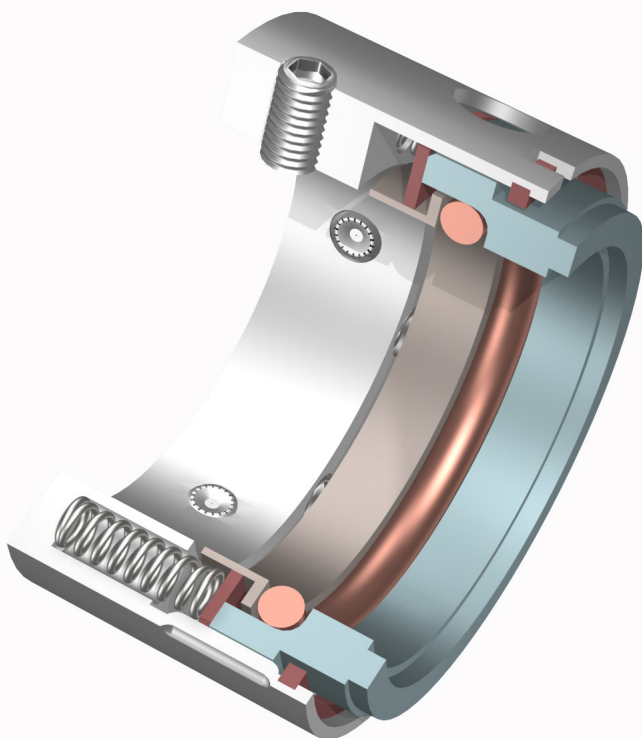


- METAL FREE CONTACT PARTS
- REVERSE BALANCED DESIGN
- CAN TOLERATE PRESSURE REVERSAL
- SUBSTITUTES PTFE BELLOW SEAL AT HIGHER PRESSURES & TEMPERATURES
- CAN BE USED ON PRODUCT SIDE FOR BACK TO BACK DOUBLE SEALS

SEB seals are externally mounted and reverse balanced for use upto 16 bar. No metallic parts come in contact with the liquid. Therefore, these seals are suitable for corrosive duties. Retained stationary seats are recommended with these seals.

# SSEB

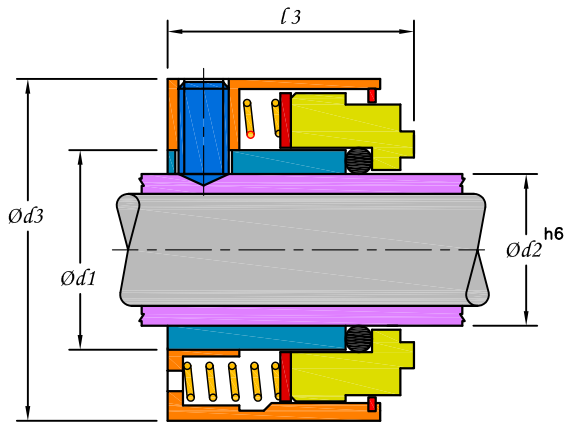
## REVERSE BALANCED COMPACT SEAL



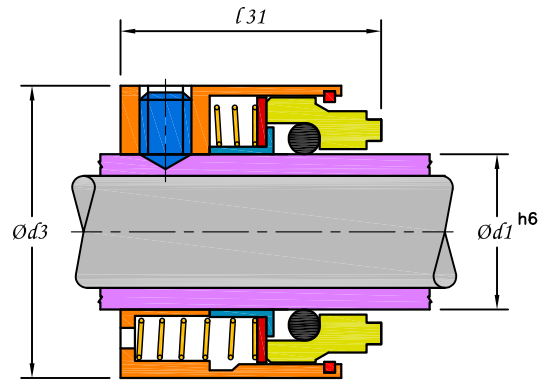
- METAL FREE CONTACT PARTS
- COMPACT DESIGN
- INTERCHANGEABLE WITH CONVENTIONAL PUSHER SEALS
- IDEAL CHOICE FOR PRODUCT SIDE SEAL FOR B/B ARRANGEMENTS
- AVAILABLE WITH HARD FACE COMBINATION
- CAN BE INSTALLED ON ANSI, DIN & ISO STANDARD BORE PUMPS

SSEB seals are externally mounted reverse balanced seals for pressures upto 6 bar. When installed on the product side with retained seat of B/B arrangement, the seal can also be used in tandem mode because of the floating dynamic 'O' ring.

# INSTALLATION DIMENSIONS



**SEB**



**SSEB**

**INCH SIZES**

SIZE CODE INCH	d1	d2	d3	l3
0254	25.40	19.05	40.4	28.6
0286	28.57	22.22	43.6	28.6
0317	31.75	25.40	48.3	28.6
0349	34.92	28.57	49.6	29.4
0381	38.10	31.75	53.2	29.4
0413	41.27	34.92	56.3	29.4
0445	44.45	38.10	59.5	29.4
0476	47.62	41.27	63.5	29.4
0508	50.80	44.45	66.7	29.4
0539	53.97	47.62	71.4	29.4
0571	57.15	50.80	72.2	29.4
0603	60.32	53.97	76.2	29.4
0635	63.50	57.15	79.4	34.1
0667	66.67	60.32	82.5	34.1
0698	69.85	63.50	85.7	34.1

**INCH SIZES**

SIZE CODE INCH	d1	d3	l31
0254	25.40	40.4	28.6
0286	28.57	43.6	28.6
0317	31.75	48.3	28.6
0349	34.92	49.6	29.4
0381	38.10	53.2	29.4
0413	41.27	56.3	29.4
0445	44.45	59.5	29.4
0476	47.62	63.5	29.4
0508	50.80	66.7	29.4
0539	53.97	71.4	29.4
0571	57.15	72.2	34.1
0603	60.32	76.2	34.1
0635	63.50	79.4	34.1
0667	66.67	82.5	36.5
0698	69.85	85.7	36.5

**LIMITING PARAMETERS**

PRESSURE
SEB : 16 BAR
SSEB : 6 BAR

TEMPERATURE
UP TO 280°C
DEPENDING ON ELASTOMER

SPEED
26 m/sec

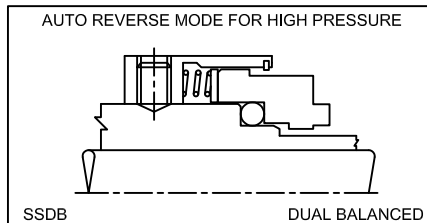
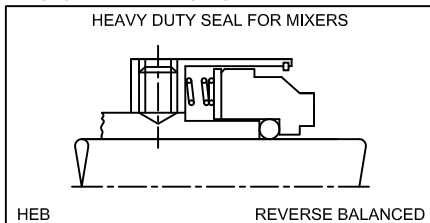
**MATERIALS**

METAL PARTS
SS316
ALLOY-20
HAST-C

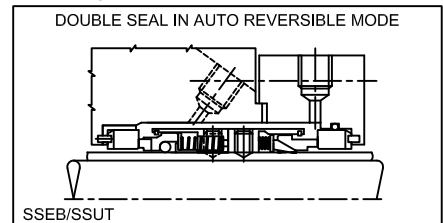
SEAL FACES	
ROTARY	STATIONARY
CARBON	CERAMIC, SIC, TC
SIC	SIC, TC

ELASTOMERS
VITON, NBR
NEOPRENE, EPDM
FFKM, FEP

**DESIGN VARIATIONS**



**ARRANGEMENT**



For more information on Design variations write to HI-FAB  
 Registered Trademarks : Viton - Du Pont Hastelloy - Haynes International, Inc. Kalrez - Du Pont Aflas - Asahi Glass Co.



**HI-FAB ENGINEERS PVT. LTD.**  
 D-148, Bonanza Indl. Estate, Ashok Chakravarty Road,  
 Kandivali (E), Mumbai - 400 101. INDIA.  
 Tel. : +91 (0)22 2887 1173, 2887 9351, 2884 1278  
 FAX: +91 (0)22 2887 0375, E-mail : info@hi-fab.com  
 Website : http://www.hi-fab.com

