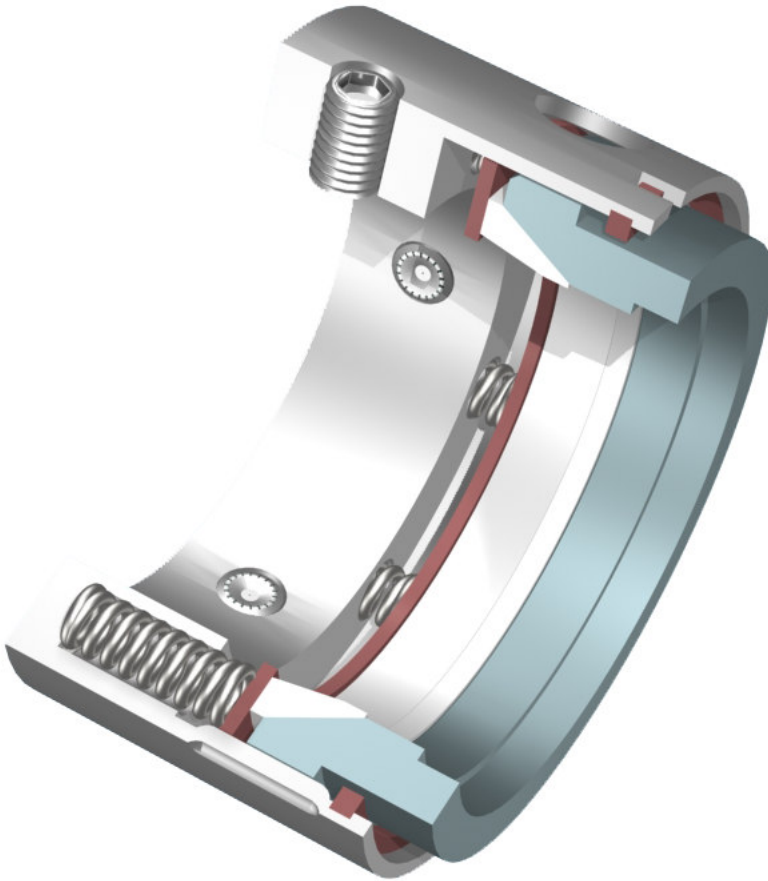


# SS

## MULTIPLE SPRING PUSHER SEALS



- UNITIZED COMPRESSION UNIT
- BIDIRECTIONAL ROTATION
- FITS ON ANSI & ISO PUMPS
- AVAILABLE IN METRIC SIZES  
DIN 24960 / EN 12756 (L1K)
- APPLICATION SPECIFIC DESIGN  
VARIATIONS FOR DIFFERENT NEEDS

HI-FAB SS series seals are multispring, pusher type seals in unbalanced and balanced configurations. Most versatile design suitable for chemical process pumps in refineries & chemical process plants.

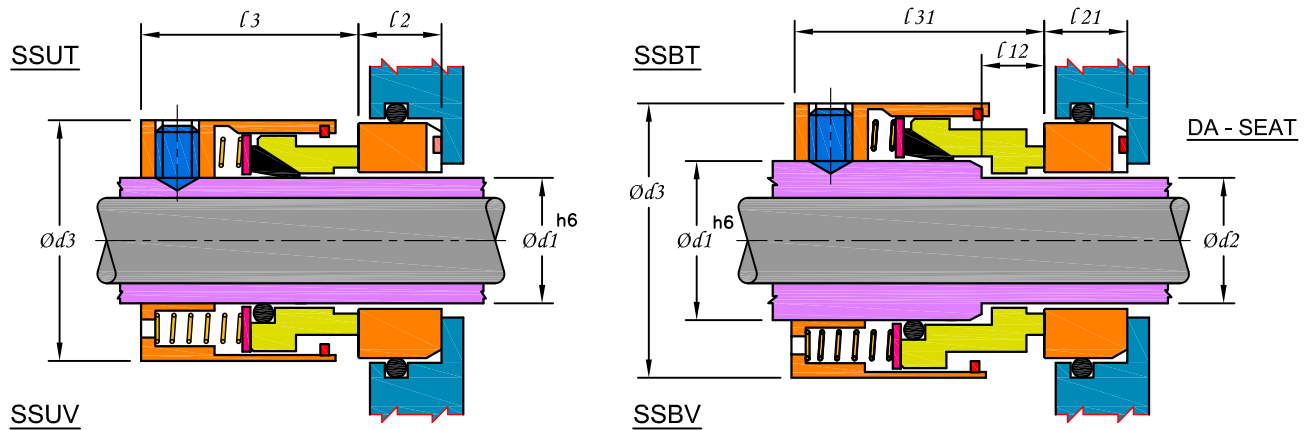
These seals are available in unitized construction which are compact and easy to install. Most of the components are interchangeable between unbalanced & balanced versions.

### APPLICATIONS :

- CLEAR AND LUBRICATING MEDIA
- PETROCHEMICALS
- GENERAL CHEMICALS
- REFINERY SERVICES



# INSTALLATION DIMENSIONS



INCH SIZES

SIZE CODE INCH	d1	d2	d3	l2	l21	l3	l31	l12
0190	19.05	15.87	30.2	11.1	11.1	28.6	33.3	7.1
0222	22.22	19.05	33.3	11.1	11.1	28.6	33.3	7.1
0254	25.40	22.22	40.4	12.7	11.1	28.6	33.3	7.1
0285	28.57	25.40	43.6	12.7	12.7	28.6	34.9	8.7
0317	31.75	25.40	48.3	12.7	12.7	28.6	34.9	8.7
0349	34.92	28.57	49.6	12.7	12.7	29.4	36.5	9.5
0381	38.10	31.75	53.2	12.7	12.7	29.4	36.5	9.5
0412	41.27	34.92	56.3	12.7	12.7	29.4	38.1	11.1
0444	44.45	38.10	59.5	12.7	12.7	29.4	38.1	11.1
0476	47.62	41.27	63.5	12.7	12.7	29.4	38.1	11.1
0508	50.80	44.45	66.7	12.7	12.7	29.4	38.1	11.1
0539	53.97	47.62	71.4	14.3	12.7	29.4	38.1	11.1
0571	57.15	50.80	72.2	14.3	12.7	34.1	44.4	12.7
0603	60.32	53.97	76.2	14.3	14.3	34.1	44.4	12.7

INCH SIZES

SIZE CODE INCH	d1	d2	d3	l2	l21	l3	l31	l12
0635	63.50	57.15	79.4	14.3	14.3	34.1	44.4	12.7
0666	66.67	60.32	82.5	15.9	14.3	36.5	46.8	12.7
0698	69.85	63.50	85.7	15.9	14.3	36.5	46.8	12.7
0730	73.02	66.67	93.6	15.9	15.9	36.5	46.8	12.7
0762	76.20	69.85	96.8	15.9	15.9	36.5	46.8	12.7
0793	79.37	73.02	101.6	15.9	15.9	36.5	46.8	12.7
0825	82.55	76.2	104.8	15.9	15.9	36.5	46.8	12.7
0857	85.72	79.4	107.9	15.9	15.9	36.5	46.8	12.7
0889	88.90	82.5	111.1	15.9	15.9	36.5	46.8	12.7
0920	92.07	85.7	114.3	17.4	15.9	38.1	46.8	12.7
0952	95.25	88.9	117.5	17.4	15.9	38.1	46.8	12.7
0984	98.42	92.1	120.6	17.4	17.5	38.1	46.8	12.7
1016	101.6	95.2	123.8	17.4	17.5	38.1	46.8	12.7

DIMENSIONS FOR METRIC SEAL TYPE SN (L1K) AVAILABLE ON REQUEST

## LIMITING PARAMETERS

PRESSURE
SSU : UPTO 16 BAR
SSB : UPTO 40 BAR

TEMPERATURE
-20°C TO 280°C
DEPENDING ON ELASTOMER

SPEED
26 m/sec

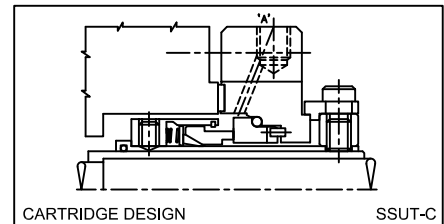
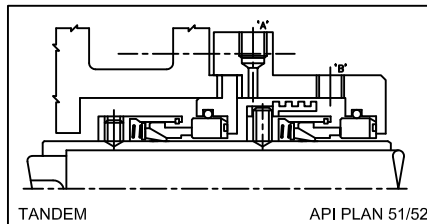
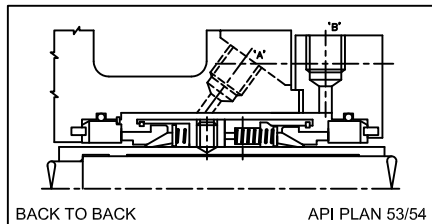
## MATERIALS

METAL PARTS
SS316
ALLOY-20
HAST-C

SEAL FACES	
ROTARY	STATIONARY
CARBON	CERAMIC, SIC, TC
GFT	CERAMIC
SIC	SIC

ELASTOMERS
VITON, PTFE
EPR, KALREZ
AFLAS

## ARRANGEMENTS



Registered Trademarks : Viton - Du Pont, Hastelloy - Haynes International, Inc. Kalrez - Du Pont Aflas - Asahi Glass Co.

	<b>HI-FAB ENGINEERS PVT. LTD.</b> D-148, Bonanza Indl. Estate, Ashok Chakravarty Road, Kandivali (E), Mumbai - 400 101. INDIA. Tel. : +91 (0)22 2887 1173, 2887 9351, 2884 1278 FAX: +91 (0)22 2887 0375, E-mail : info@hi-fab.com Website : http://www.hi-fab.com	
--	---	--

Due to continuous improvement specifications & dimensions may change without prior notice